

Local Development Plan | 2030

Draft Plan Strategy

Evidence Paper 8: Community Facilities

June 2019

Forward Planning Team

Antrim and Newtownabbey Borough Council
Planning Section
Mossley Mill
Newtownabbey
BT36 5QA

Tel: 0300 123 6677

Email: planning@antrimandnewtownabbey.gov.uk

Table of Contents

Executive Summary	4
1 Introduction.....	5
2 Legislative Context	6
3 Regional Policy Context.....	7
4 Local Policy Context.....	13
5 Preferred Options Paper	16
6 Soundness	17
7 Education and Childcare Provision.....	17
8 Health and Social Care Provision	24
9 Community, Cultural and Leisure Facilities.....	26
10 Key Findings	30
Appendices.....	31
Appendix 1 – Distribution of Educational Facilities	32
Appendix 2 – Distribution of Health Facilities	33
Appendix 3 – Distribution of Community Facilities	34

Executive Summary

- The Planning System has an active role to play in supporting the Executive's key priority of improving health and well-being, to better the lives of people and communities in Northern Ireland.
- The Regional Development Strategy (RDS) promotes the important link between environment, health and wellbeing and places an emphasis on supporting healthy lifestyles and the promotion of health in the community.
- Improving health and well-being is a core planning principle of the Strategic Planning Policy Statement (SPPS). The SPPS recognises that well designed buildings and successful places can have a positive impact on how people feel.
- The Local Development Plan (LDP) has an important role in ensuring community facilities such as health, education and other community facilities can be accommodated through the planning process.
- There are approximately 23 pre-schools, 7 stand-alone nursery schools, 10 nursery units within primary schools, 53 primary schools, 10 post-primary schools, 5 special schools and 3 further and higher education establishments within the Borough.
- 14 of the 53 primary schools within the Borough are considered to be below the minimum enrolment threshold as detailed in the Sustainable Schools Policy report.
- For the academic year 2017/18 there were approximately 21,711 persons enrolled in the Borough's pre-schools, nursery schools, primary and post primary schools, and special needs schools. There were 5,213 unfilled spaces across primary and post primary schools for the year 2017/18.
- Ballyclare settlement has no spare capacity at post primary school level.
- The Northern Health Trust offers a full range of healthcare facilities in the Borough, with 16 GP surgeries, 23 dental surgeries and 30 pharmacies.
- There are 10 community centres, 6 leisure centres, 2 pavilions and a range of other cultural facilities provided by the Council within the Borough.
- The 2 main civic buildings are Antrim Civic Centre and Mossley Mill.
- There are 8 libraries and 15 mobile library stops throughout the Borough.
- There are 2 police stations, 4 fire stations, 2 jobs and benefits offices and 22 post offices within the Borough.

1 Introduction

- 1.1 This is one of a series of background papers and studies being presented as part of the evidence base to inform the preparation of the Antrim and Newtownabbey Local Development Plan 2030 (LDP). This paper draws together the evidence base used in relation to the topic of the community facilities. The evidence in this paper was collated at a point in time and may be subject to further updates. Evidence papers should be read collectively.
- 1.2 In line with Departmental guidance, the Council has updated its evidence base to inform the next stage of the LDP known as the Plan Strategy. This paper updates the 'Meeting the Needs of Society' baseline evidence paper, as it relates to Community Facilities, which accompanied the Preferred Options Paper (POP) published in January 2017.
- 1.3 It should be noted that the evidence base collected to inform the draft Plan Strategy also forms the basis for additional assessments and appraisals required as part of the plan preparation process, most notably the Sustainability Appraisal (SA).
- 1.4 The Planning System operates in the public interest and seeks to address the current and future needs of society, including community facilities. These include services relating to health, social care and education, as well as wider community services. The LDP has an important role in ensuring that necessary community facilities can be sustainably accommodated through the planning process to meet the needs of the population.
- 1.5 It is important to note that the provision of most public services, including health and education, does not lie within the remit of the Council or the LDP and are the primary responsibility of Government Departments and statutory bodies. Where a need has been identified by these providers, it shall be the role of the LDP to facilitate these services, zone potential sites and to ensure that existing infrastructure is protected, unless it has been demonstrated that it is no longer required.
- 1.6 If Antrim and Newtownabbey is to continue to grow as an attractive place to live, invest and do business in, then our public services need to be continually adapting and improving. The LDP will have a supportive role in facilitating the provisions of community facilities through policy and the zoning of land specifically for such use.
- 1.7 This paper provides an overview of community facilities across the Borough, comprising of the following topics:
 - Education and Childcare Provision;
 - Health and Social Care Provision; and
 - Community, Cultural and Leisure Facilities.

2 Legislative Context

The Planning Act (Northern Ireland) 2011

- 2.1 The Planning Act (Northern Ireland) 2011 (hereafter referred to as the 2011 Act) is the principal planning legislation in Northern Ireland, which underpins the reformed two-tier planning system that commenced on 1 April 2015. It introduced the plan-led system, where the LDP is the primary consideration for decision making on all new development schemes and proposals will be required to accord with its provisions unless, exceptionally other material considerations indicate otherwise.
- 2.2 Under the new Planning System introduced in 2015, the LDP will comprise of two documents, a Plan Strategy and a Local Policies Plan that will be prepared in sequence. It also requires the LDP to be subject to a Sustainability Appraisal (SA).

The Planning (Local Development Plan) Regulations (Northern Ireland) 2015

- 2.3 These Regulations set out the sequence in which the Council's new LDP is to be prepared and provides detail on the content and procedure of each stage in the LDP preparation process and independent examination.

The Planning (Statement of Community Involvement) Regulations (Northern Ireland) 2015

- 2.4 These Regulations set out the sequence in which the Council's Statement of Community Involvement (SCI) is to be prepared and provides detail on the content and procedures required. The Council published its SCI in January 2016 the purpose of which is to define how the Council will engage with the community in the delivery of the LDP. It is set within the context of the Council's Corporate Plan and meets the requirements of the 2011 Act.

Northern Ireland (Miscellaneous Provisions) Act 2006

- 2.5 Section 25 of the Northern Ireland (Miscellaneous Provisions) Act 2006 requires all Northern Ireland Departments and Councils, in exercising their functions, to act in the way they consider best calculated to contribute to the achievement of sustainable development. Section 5 of the 2011 Act copper-fastens this duty by requiring those who exercise any function in relation to LDPs to do so with the objective of furthering sustainable development.

Local Government Act (Northern Ireland) 2014

- 2.6 The Local Government Act (Northern Ireland) 2014 introduced a statutory link between a Council's Community Plan and LDP, and requests that the preparation of the LDP must take account of the Community Plan.

Section 75 of the Northern Ireland Act 1998

- 2.7 The Council has a statutory duty under Section 75 of the Northern Ireland Act 1998 as a public authority, in carrying out its functions relating to Northern Ireland, to have due regard to the need to promote equality of opportunity between the nine equality categories of persons of different religious belief, political opinion, racial group, age, marital status or sexual orientation; men

and women generally; persons with a disability and persons without; and persons with dependants and persons without.

- 2.8 Council has engaged and will continue to engage with Section 75 groups throughout the LDP process, adhering to the Council's SCI.

Rural Needs Act (Northern Ireland) 2016

- 2.9 The Rural Needs Act (Northern Ireland) 2016 provides a statutory duty on public authorities to have due regard to rural needs when developing, adopting, implementing or revising policies, strategies and plans, and when designing and delivering public services and came into effect for Councils in June 2017.
- 2.10 Rural needs is an ongoing and integral component of the Council's LDP.

The Environmental Assessment of Plans and Programmes Regulations 2004

- 2.11 It is a statutory requirement that all plans and programmes that are likely to have a significant environmental effect must be subject to a Strategic Environmental Assessment (SEA). The European Union Directive '2001/42/EC' states that an SEA is mandatory and was transposed into local legislation in the form of The Environmental Assessment of Plans and Programmes Regulations (Northern Ireland) 2004 (the EAPP (NI) Regulations). The objective of the SEA directive is to provide for a high level of protection of the environment and to contribute to the integration of environmental considerations into the Council's LDP, with the view to promoting sustainable development.
- 2.12 The SEA is an ongoing process and must be carried out in conjunction with, and integrated into the LDP process. Under the provisions of the SEA Directive and the Regulations, an environmental report is published with the LDP document.

The Conservation (Natural Habitats, etc.) Regulations (Northern Ireland) 1995

- 2.13 The LDP is required to consider its impact on the integrity of Natura 2000 sites (these comprise Special Areas of Conservation, Special Protection Areas and RAMSAR Sites) and will be subject to a Habitats Regulation Assessment (HRA). Similar to the SEA the HRA is an on-going process, which will take place at key stages during the preparation of the LDP. The Regulations contribute to transposing the requirements of the EC Habitats and Birds Directives.

3 Regional Policy Context

Draft Programme for Government Framework 2016-2021

- 3.1 The key aim of the draft Programme for Government (PfG) is to grow a sustainable economy through investing in the future, tackling disadvantage, improving health and wellbeing, protecting the people and the environment, building a strong and shared community and delivering high quality services.
- 3.2 The delivery of many of the strategic outcomes will be the responsibility of central government, however, the LDP will play a supporting role in helping to deliver many of these. Particularly relevant is Outcome 14, 'We give our

children and young people the best start in life'. This outcome aims to ensure that all of our children and young people grow up in a society that provides them with the support they need to achieve their full potential. This includes good health, a secure family and community environment including an adequate standard of living, education, opportunities for cultural and artistic expression, opportunities to make a positive contribution to society, physical exercise, space to play, and protection from violence and harm.

Sustainable Development Strategy Northern Ireland 2010

- 3.3 One of the overarching principles of the Sustainable Development Strategy (SDS) is to ensure a strong, healthy, just and equal society, which can be achieved by meeting the diverse needs of all people in existing and future communities, promoting personal well-being, social cohesion and inclusion and creating equal opportunity for all. Several objectives namely 2.3, 2.4 and 2.5 of the SDS relate to the provision of community facilities.

Regional Development Strategy 2035

- 3.4 The Regional Development Strategy (RDS) states *'improved health and well-being is in part derived from easy access to appropriate services and facilities.'* Central to the implementation of the RDS, a spatial framework is required to enable strategic choices to be made in relation to development and infrastructure investment.
- 3.5 The guiding principle of the spatial framework is to put the person at the centre, through an understanding of how different places are influenced by the range of services and functions required by individuals, where they are located, how frequently they are used and by whom.
- 3.6 The 'Hierarchy of Settlements and Related Infrastructure Wheel' illustrates the range of public and private services needed to ensure citizens have access to the necessary economic, social and cultural opportunities and the most appropriate locations for these.
- 3.7 The RDS promotes the important link between environment, health and wellbeing and places an emphasis on supporting healthy lifestyles and the promotion of health in the community under the following sections:
- Spatial Framework Guidance 5 - Seeks to protect and enhance the quality of the setting of the Belfast Metropolitan Urban Area (BMUA) and its environmental assets through protecting and enhancing our network of open spaces; and
 - Regional Guidance 6 - Aims to strengthen community cohesion by developing integrated services and facilities.

Regional Transportation Strategy for Northern Ireland 2002-2012

- 3.8 The Regional Transport Strategy (RTS) for Northern Ireland 2002-2012 identifies strategic transportation investment priorities and considers potential funding sources and affordability of planned initiatives over the strategy period. The RTS is a 'daughter document' of the Regional Development Strategy for Northern

Ireland 2035, which sets out the spatial development framework for Northern Ireland up to 2035.

- 3.9 This Strategy was supported by three initiatives namely Belfast Metropolitan Transport Plan 2004, Regional Strategic Transport Network Transport Plan 2015 and the Sub-Regional Transport Plan 2007.

Belfast Metropolitan Transport Plan 2004

- 3.10 The Belfast Metropolitan Transport Plan (BMTP) 2004 is the local transport plan for the Belfast Metropolitan Area (BMA) including Metropolitan Newtownabbey. This plan delivered a phased and costed implementation programme of transport schemes to 2015. This plan took forward the strategic initiatives of the RTS 2002-2012.

Regional Strategic Transport Network Transport Plan 2015 (2005)

- 3.11 The former Department for Regional Development (DRD), now the Department for Infrastructure (DfI) prepared the Regional Strategic Transport Network Transport Plan (RSTN TP) 2015. The Plan is based on the guidance set out in the RDS 2035 and the RTS 2002-2012. The Plan presents a range of multi-modal transport initiatives to manage, maintain and develop Northern Ireland's Strategic Transport Network. The Regional Strategic Transport Network of Northern Ireland comprises the complete rail network, five Key Transport Corridors (KTCs), four Link Corridors, the Belfast Metropolitan Transport Corridors and the remainder of the trunk road network.

Sub-Regional Transport Plan 2007

- 3.12 The Sub-Regional Transport Plan (SRTP) 2007 covers Antrim and takes forward the strategic initiatives of the Regional Transportation Strategy (RTS) for Northern Ireland 2002-2012. The SRTP deals with the transport needs of the whole of Northern Ireland with the exception of the BMA and the rail and trunk road networks, which are covered, in the BMA and RSTN TP.

Ensuring a Sustainable Transport Future – 'A New Approach to Regional Transportation' 2011

- 3.13 Ensuring a Sustainable Transport Future (ESTF) was developed to build on the RTS for Northern Ireland 2002-2012 and to refocus and rebalance the investment in the future. Unlike the 2002 Strategy, Ensuring a Sustainable Transport Future (ESTF) does not include details of schemes or projects. Rather, the Department has set three High Level Aims for transportation along with twelve supporting Strategic Objectives, covering the economy, society and the environment. The ESTF complements the RDS 2035 and contains high-level aims and strategic objectives to support the growth of the economy, enhance the quality of life for all and reduce the environmental impact of transport. It sets out the approach to regional transportation and is used to guide strategic investment decisions beyond 2015. Work is progressing on the implementation of the ESTF and the Council will ensure that any future transportation projects affecting the Borough are appropriately reflected in the LDP.

Forthcoming Transport Plans

- 3.14 The Department for Infrastructure is currently preparing new Transport Plans which will cover the Borough. This includes a new Regional Strategic Transport Network Plan for all of Northern Ireland and a new Belfast Metropolitan Transport Plan which will cover Belfast City Council, Lisburn and Castlereagh City Council, Ards and North Down Borough Council and Mid and East Antrim Borough Council as well as Antrim and Newtownabbey Borough Council. Antrim and Newtownabbey Borough Council is represented on the Project Boards for both plans along with other Councils.
- 3.15 As part of the preparation for the Belfast Metropolitan Transport Plan, the Department is preparing a Transport Study for the greater Belfast area and the Council has taken the emerging study into consideration in the preparation of its draft Plan Strategy. Work will also continue to bring forward the next stage of the LDP, the Local Policies Plan, alongside the Department's Transport Plans.
- 3.16 Further information on the Transport Study and Transport Plans is available on the Department of Infrastructure's website <https://www.infrastructure-ni.gov.uk/>.

Sustainable Water – A Long-Term Water Strategy for Northern Ireland 2015-2040

- 3.17 'Sustainable Water – A Long-Term Water Strategy for Northern Ireland (2015-2040)' sets out a range of initiatives to deliver the Executive's long term goal of a sustainable water sector in Northern Ireland. The Strategy recognises how planning can impact on flood risk and water quality and aims to ensure that existing water and sewerage infrastructure and investment proposals inform future planning decisions and the preparation of LDPs.
- 3.18 The Strategy sets out a number of matters that the Council's new LDP will need to take into account which are summarised below:
- Ensuring planning decisions are informed by up to date information on the risk from all significant sources of flooding;
 - Prevention of inappropriate development in high flood risk areas and ensuring that future development does not increase flood risk;
 - Exceptional development within high flood risk areas must make provision for adequate mitigation measures;
 - Ensure surface water drainage is adequately addressed; and
 - Planning policy should promote sustainable water and sewerage services by making appropriate space for water and sewerage infrastructure including sustainable drainage systems.

Strategic Planning Policy Statement 2015

- 3.19 The Strategic Planning Policy Statement (SPPS) recognises the importance of allocating sufficient land to meet the anticipated needs of the community, in terms of health, education, community facilities and other public services. It also enables Councils, where appropriate, to bring forward local policies that

contribute to health and well-being, including the provision of health, community and cultural infrastructure.

- 3.20 The SPPS highlights that local facilities of a high standard, which are incorporated into the overall design and layout of new residential developments, are fundamental to increasing vitality, community cohesion and socio-economic sustainability. It advises that major housing should be located in sustainable locations that facilitate a high degree of integration with employment centres, community services and public transport and promotes the integration of adequate infrastructure into new housing development to meet the needs of the community. The SPPS also seeks to protect and enhance diversity in the range of town centre uses such as leisure, community and cultural facilities.
- 3.21 The SPPS advises that the LDP preparation may involve liaison with bodies and agencies to understand and take account of health issues and the needs of local communities where appropriate. It also directs that where appropriate the Council may bring forward local policies that contribute to improving health and well-being as well as those which promote social cohesion and the development of social capital, the provision of health, security, community, and cultural infrastructure and other local facilities.

Belfast Region City Deal

- 3.22 The Belfast Region City Deal (BRCD) is a bespoke package of funding and decision-making powers negotiated between Central Government and Local Authorities for the Belfast Region. The BRCD comprises the six Councils of Antrim and Newtownabbey, Ards and North Down, Belfast City, Lisburn and Castlereagh, Mid and East Antrim and Newry, Mourne and Down. The central goal of the BRCD is to deliver;

'More and better jobs; inclusive growth; improved skills and increased domestic business and foreign direct investment.'

- 3.23 In developing the ambitious proposition, the BRCD Councils have considered a programme of projects across four key investment pillars, which channel investment to the priority high growth sectors. The four key investment pillars are; Innovation; Digital; Economic Infrastructure and Employability & Skills.
- 3.24 The BRCD recognises that the delivery of sustainable economic growth is rooted in the education and skills of the workforce; therefore, it is imperative that the LDP responds to accommodating the educational establishments of the future.

Making Life Better - A Whole System Strategic Framework for Public Health 2013 - 2023

- 3.25 'Making Life Better' is the strategic framework for public health. It is designed to provide direction for policies and actions to improve the health and wellbeing of people in Northern Ireland and to reduce inequalities in health. It builds on the former public health strategy 'Investing for Health' and takes account of consultation feedback on the draft framework 'Fit and Well – Changing Lives' and a number of other key reports and evidence.

Transforming Your Care: A Review of Health and Social Care in Northern Ireland' (TYC) 2011

- 3.26 Published in 2011, this review sets out proposals for change across a range of health and social care services. In 2013, the post-consultation report on the TYC review set out key recommendations for change across a number of important service areas including primary care, older people's services and acute services for those with long-term conditions. There was also a focus on prevention, early intervention, integrated care and promotion of personalised care to enable more services to be provided in the community. This will result in a significant shift from provision of services in hospitals to the provision of services in the community, where it is safe and effective to do this.

The Right Time – The Right Place 2014 (The Donaldson Report)

- 3.27 Sir Liam Donaldson a former medical officer of England was subsequently commissioned to carry out a review into Northern Ireland's health service. Sir Liam said that the Transforming Your Care (TYC) programme established that elsewhere in the UK a population of 1.8 million people would likely be served by 4 acute hospitals compared to the 10 that currently exist in Northern Ireland. The report made 10 recommendations; the crux of which was that TYC was not being properly implemented and a new costed, timetabled implementation plan was needed quickly to address a series of deficiencies across a wide range of health care services.

Other Planning Policy

- 3.28 Current operational planning policy, in relation to aspects of community facilities is primarily included within the following Planning Policy Statements (PPSs):
- The Planning Strategy for Rural Northern Ireland;
 - PPS 7 Quality Residential Environments; and
 - PPS 21 Sustainable Development in the Countryside.

- 3.29 These PPSs, as well as the SPPS, have been taken into consideration in the formulation of the detailed development management policies, which are contained within the draft Plan Strategy document.

Departmental Guidance

- 3.30 The LDP has been prepared taking account of Departmental policy and guidance, which is available by contacting the Department for Infrastructure.
- 3.31 The Development Plan Practice Note 7 'The Plan Strategy' published in 2015, guides officers and relevant users through the key requirements for the preparation of the Plan Strategy and deals primarily with procedures as well as good practice.
- 3.32 Development Control Advice Notes (DCANs) are non-statutory planning guidance, which is intended to supplement, elucidate and exemplify policy documents including PPSs and development plans. The DCANs relating to community facilities include:

- DCAN 9 Residential and Nursing Homes; and
 - DCAN 13 Crèches, Day Nurseries and Pre-School Playgroups.
- 3.33 The supplementary planning guidance 'Creating Places - Achieving Quality in Residential Development' (2000) has been the principal guide for use by prospective developers in the design of all new housing areas. The guide recognises the importance of well-designed community buildings and the provision of local neighbourhood facilities in new residential developments and seeks to encourage a greater emphasis on creating a sense of place and community in new residential developments as a means to increase vitality, provide a sense of community, and enhance its social and economic sustainability.
- 3.34 The supplementary planning guidance 'Living Places: An Urban Stewardship and Design Guide for Northern Ireland' (2014) is a key reference point for formulating LDPs and recognises the wider economic, cultural and community benefits of achieving excellence in the stewardship and design of these places, be they existing or proposed.

4 Local Policy Context

Legacy Development Plans

- 4.1 The following is a list of the legacy development plans that apply to the Borough:
- Antrim Area Plan 1984-2001 and its alterations (AAP);
 - Belfast Urban Area Plan 2001 (BUAP);
 - Carrickfergus Area Plan 2001¹ (CAP);
 - Draft Newtownabbey Area Plan 2005 (dNAP); and
 - Draft Belfast Metropolitan Area Plan 2015 (dBMAP).
- 4.2 It should be noted that the Belfast Metropolitan Area Plan adopted in September 2014 was subsequently quashed as a result of a judgement of the Court of Appeal delivered in May 2017. As a consequence, the BUAP is now the statutory development plan for the Metropolitan Newtownabbey area of the Borough, with dBMAP remaining a material consideration.

Community Plan – Love Living Here 2017

- 4.3 The Council's Community Plan, 'Love Living Here', sets out a shared vision and agreed outcomes for the area up to 2030. The successful implementation of the Community Plan will be marked by a demonstrable improvement in how services are delivered across our Borough and the quality of life our citizens

¹ Insofar as it relates to that part of the legacy Carrickfergus Borough Council area at Greenisland that transferred to Antrim and Newtownabbey Borough in 2015 under Review of Public Administration (RPA).

experience. As such, the Community Plan is an important document and has been taken into account in the preparation of the Council's LDP.

4.4 The Community Plan sets out four outcomes which are as follows:

- Our citizens enjoy good health and wellbeing;
- Our citizens live in connected, safe, clean and vibrant places;
- Our citizens benefit from economic prosperity; and
- Our citizens achieve their full potential.

4.5 It also sets out one wildly important goal namely that our vulnerable people are supported.

Corporate Plan – Our Borough Your Vision 2019-2030

4.6 The Council's Corporate Plan sets out our vision for the Borough and identifies what we need to do between now and 2030 to achieve this. The Vision for the Borough up to 2030 is defined as,

'A progressive, smart and prosperous Borough. Inspired by our people; Driven by ambition.'

4.7 The Corporate Plan sets out a number of objectives in relation to Place, People and Prosperity. The LDP has a key role to play under the objective of 'place' and the corporate plan states:

'We will have succeeded if: People take pride in their surroundings. People feel safe. Our environment, natural habitats and built heritage are protected and enhanced. We have vibrant and welcoming towns, villages, neighbourhoods, and rural areas. We have an efficient planning process that promotes positive development and sustainable growth.'

Council Masterplans/Village Plans

4.8 Through the Village Renewal Scheme as supported by the Rural Development Programme 2014-2020 the Council benefited from funding to devise and update plans for the development of villages in the Borough. Whilst these plans are non-statutory, they have been prepared in close conjunction with local residents and identify a range of potential projects to improve the settlements. These range from short term goals to long-term aspirations. The village plans alongside the masterplans relating to the Borough will be considered in the preparation of the LDP where relevant.

Cross Boundary Policy Context

4.9 In considering the local policy context, it is important to note that the Borough does not sit in isolation. Accordingly, it will be important to take account of our neighbouring local authorities comprising; Belfast City Council; Lisburn and Castlereagh City Council; Armagh, Banbridge and Craigavon Borough Council; Mid Ulster District Council and Mid and East Antrim Borough Council.

4.10 Neighbouring Council's Preferred Options Papers (POPs), supporting evidence base and draft Plan Strategies have been taken account of, as these are regarded as the main cross boundary documents to be considered in addition to regional guidance.

Table 1: Neighbouring Council Position

Council	Document
Armagh City, Banbridge and Craigavon Borough Council (ACBCBC)	<p>ACBCBC recognises the importance of having well-configured and connected places and buildings for their contribution towards improving health and well-being of their citizens. In the POP, ACBCBC state that they will seek to bring forward policies that are pro-active in nature; ensuring new developments are designed to encourage healthier lifestyles and well-being of communities. Under the Key Issue SOC 6: 'Facilitating community and cultural facilities to meet the needs of the Borough' the POP identifies ACBCBC preferred option to:</p> <p><i>"Identify and protect specific sites where a firm proposal is in place; and bring forward a criteria based policy for development proposals to be assessed against, to facilitate new community and cultural facilities (including extensions to existing facilities)."</i></p> <p>The preferred option is two-fold in purpose and deals with the allocation of lands for future community and cultural provision as well as providing an adequate framework for assessing related development proposals. ACBCBC is currently working towards publication of its draft Plan Strategy publication.</p>
Belfast City Council (BCC)	<p>BCC draft Plan Strategy envisages promoting new developments that are accessible for all groups in society, contributing towards enhancing the health and well-being of communities, neighbourhoods and places. The draft Plan Strategy also stresses the importance of the design and layout of new developments relating to the promotion of health and well-being, social inclusion and an active lifestyle. The draft Plan Strategy includes a range of policies including:</p> <ul style="list-style-type: none"> • 'Policy HC1 Promoting Healthy Communities' – seeks to ensure that all new developments maximise opportunities to promote healthy and active lifestyles. • 'Policy CI1 Community Infrastructure'- seeks to protect and provide development opportunities for community, health, leisure, nurseries and educational facilities based on local need in line with the projected population growth over the plan period. • 'Policy EC7 Higher Education institutions' – seeks to promote the growth and expansion of further and higher education institutions as drivers of improved skills by promoting these institutions as employment hubs for the innovation sector and the wider knowledge economy.
Lisburn and Castlereagh City Council (LCCC)	<p>In the POP, LCCC state that they will seek to bring forward policies that contribute to improving health and wellbeing (in keeping with regional policy set out in the RDS 2035 and SPPS) such as those which promote social cohesion and allocate sufficient land for the appropriate provision of education, health, community and cultural infrastructure for local communities. Under Key Issue 4: 'Facilitating Education, Health, Community and Cultural Facilities' the POP identifies LCCC's preferred option:</p> <p><i>"Land identified for education, health, community or cultural uses by the relevant providers will be protected from</i></p>

	<p>development for alternative uses through the new Local Development Plan."</p> <p>LCCC is currently working towards publication of its draft Plan Strategy publication.</p>
Mid and East Antrim Borough Council (MEA)	<p>The POP does not specifically identify a preferred option for community facilities, however, it does highlight that a number of schools will benefit from refurbishment and extensions, over the plan period as well as bringing forth new educational facilities.</p> <p>The POP further highlights that the LDP will protect specific sites for education, health, community and cultural facilities where a firm proposal is in place on the part of the service provider; that access to services and facilities is taken account of in plan decisions and; that where new developments have been identified for developers to contribute towards new community infrastructure either within their site or in the locality. This will be delivered through planning conditions or agreements.</p> <p>MEA is currently working towards publication of its draft Plan Strategy and it's anticipated that this document will set out criteria based policy, which supports the delivery of new health, education, community and cultural facilities, in locations that encourage active travel and sustainable development and the extension of such facilities.</p>
Mid Ulster District Council (MUDC)	<p>The draft Plan Strategy seeks 'to ensure that there is sufficient land to meet the anticipated needs of the community, in terms of health, education and other public facilities.' This is supported by 'Policy COY 1 – Community Uses', which seeks to ensure where necessary, land will be reserved for community use either through a community zoning or a key site requirement on an opportunity site or other land use zoning as designated in the Local Policies Plan.</p>

- 4.11 The Council has responded to neighbouring Council's POPs and LDP documents as they are published. In addition, the Council is also represented on a number of working groups and project boards to discuss cross boundary issues. This includes the Metropolitan Area Spatial Working Group and the Belfast Metropolitan Plan Project Board.
- 4.12 In terms of growth across the region, the Council view is that no neighbouring Council's growth strategy should have a negative impact on the Council's LDP in terms of resources for infrastructure provision delivered by statutory providers.
- 4.13 In consideration of neighbouring Council's documents as well as regional policy, it is the opinion of the Council that it's draft Plan Strategy is sound and is not in conflict with neighbouring Council's emerging LDPs.

5 Preferred Options Paper

- 5.1 The Council's Preferred Options Paper (POP) was published in 2017 and was the first formal stage in the preparation of the LDP for the Borough and was

designed to promote debate in relation to key strategic planning issues arising in the area. The POP set out a range of strategic options in relation to how and where development should be located within the Borough. It included options for the Borough's settlements, centres, employment land and housing locations, as well as a number of other key planning issues.

- 5.2 In addition, the Council asked the public for their views on a range of planning topics and issues. A total of 148 representations were received which were considered during the development of the draft Plan Strategy document and, where relevant, these will also be considered during the preparation of the Local Policies Plan. Details are set out in the Council's published 'Preferred Options Paper Public Consultation Report 2019'.

6 Soundness

- 6.1 The LDP is prepared to meet the tests of soundness as set out in the Department for Infrastructure's Development Plan Practice Note 6: Soundness (Version 2, May 2017).

7 Education and Childcare Provision

Organisations Responsible for Education

- 7.1 The Department of Education (DE) has overall responsibility for education policy up to higher and further education level, where responsibility then falls to the Department for Communities (DfC) and Department for the Economy (DfE). Since April 2015, a single Education Authority (EA) with five sub-regional office locations has replaced the five former education and library boards. The education facilities in the Borough are shown in Appendix 1.
- 7.2 Responsibility for the provision of primary and post primary education in the Borough rests mainly with the following providers:
- Education Authority (North East Region);
 - Northern Ireland Council for Integrated Education (NICIE);
 - Council for Catholic Maintained Schools (CCMS); and
 - Comhairle Na Gaelscolaíochta (Council for Irish Medium Education).
- 7.3 The DE's vision is to see, 'every young person achieving his or her full potential at each stage of their development'. Therefore, education is one of the most significant investments in developing the individual, society and the economy. In recent years, a number of influential publications have set a challenge to the education sector to consider new approaches including a sustainable approach, promoting the sharing of facilities in an effort to create a more cohesive and tolerant society and ensuring a better use of available resources.
- 7.4 An Independent Strategic Review of Education, known as the Bain Review (2006) is the most significant document to be published. The Bain Review observed that the multi-sector school system, combined with the rural nature of

parts of Northern Ireland, single-sex schools and selective system of education had resulted in a large number of schools and a high proportion of small schools. Whilst the report made 61 recommendations, the governing principle in judging the future of any school must be the quality of education provided.

- 7.5 Building on the issues highlighted in the Bain Report, the DE introduced the Sustainable Schools Policy (SSP) in 2009, followed by the Area Planning process (2011) which is designed to address the long-term primary school needs from 2012-2025. The overall output of these is the assessment of schools against a set of criteria for sustainable enrolment levels, delivery of quality education and financial sustainability.
- 7.6 'Further Education Means Success: The Northern Ireland Strategy for Further Education' and its Programme for Implementation was published in 2016. The strategy comprises of nine themes providing the future direction for further education in Northern Ireland and sets out 21 new policy commitments.
- 7.7 Further Education has a dual role in Northern Ireland. It has the ability to generate a strong and vibrant economy through the development of professional and technical skills and has the potential to support social inclusion by providing those with low or no qualifications, or those who have a barrier to learning, with the skills and qualifications needed to find employment and to become economically active.

Pre-School and Nursery Provision

- 7.8 Pre-schools are settings which children attend prior to entering primary school, and are usually incorporated in day-care centres, church/community playgroups, nursery schools and nursery units affiliated to primary schools. As indicated in Table 2 there are 23 pre-schools within the Borough, with 562 pupils enrolled.

Table 2: Pre-School Enrolments 2017/2018

School	Total Enrolment
Glengormley IPS Playgroup	44
Greendale Day Nursery	25
Hollybank Pre-School	20
Mallusk Community Playgroup	32
Newtownabbey Methodist Mission Playgroup	26
St Bernard's Pre School Playgroup	40
St MacNissis Preschool Playgroup	24
St Mary's on the Hill Preschool Playgroup,	24
Metropolitan Newtownabbey sub-total	235
Little Hands Pre School	14
Maine Integrated Playgroup	23
Muckamore Pre School Playgroup	26
Naiscoil Na Tamhnimoire	27

School	Total Enrolment
Randalstown Community Playgroup	26
Round Tower Community Playgroup	24
St Comgall's Playgroup	24
Antrim sub-total	164
Kilbride Playgroup	15
Primrose Hill Day Nursery	25
TirnanÓg Playgroup	24
Ballyclare sub-total	64
The ladybirds Pre-school @ABC Day Nursery	21
Crumlin Integrated Pre School	16
Naíscoil Ghleann Darach	27
Crumlin sub-total	64
Tiny Tots Pre School Centre, Toome	23
Naiscoil na Fioba, Toome	12
Toome sub-total	35
Borough total	562

Source: <https://www.education-ni.gov.uk/publications/school-enrolments-school-level-data-201718>

- 7.9 Nursery schools provide pre-school education for children in their immediate pre-school year. Table 3 shows that there are 7 stand-alone nursery schools in the Borough with an enrolment of 677 pupils. Six of these nursery schools are in the Controlled Sector, providing for 599 pupils and the remaining nursery schools are within the Maintained Sector with 78 pupils.
- 7.10 There are also 10 nursery units within primary schools in the Borough. These are located at: Earlview; Mossgrove; Rathcoole; Templepatrick; Whitehouse; Mount St Michael's; St Bernard's; St James'; St Joseph's, Crumlin; and St Oliver Plunkett's. There are no unfilled spaces within nursery schools in the Borough.

Table 3: Nursery School Enrolments 2017/2018

School	Approved Enrolment	Total Enrolment
Ashgrove Nursery, Newtownabbey	78	79
Ballyhenry Nursery School	52	52
Monkstown Nursery School	78	78
Mossley Nursery School	78	78
Metropolitan Newtownabbey sub-total	286	287
Steeple Nursery School	156	156
St Joseph's Nursery School	78	78
Antrim sub-total	234	234
Ballyclare Nursery School	156	156

School	Approved Enrolment	Total Enrolment
Borough total	676	677

Source: <https://www.education-ni.gov.uk/publications/school-enrolments-school-level-data-201718>

7.11 There are 366 registered private/voluntary sector childcare providers operating within the Borough as shown in Table 4. The registered services include:

Table 4: Registered Childcare Provision in the Borough

Types of Provision	Number of Providers
Approved Home Childcare	23
Childminders	213
Crèche	3
Day Nursery	25
Out of School	30
Parent and Toddler	42
Playgroup	30

Source: <http://www.familysupportni.gov.uk/>

Primary School Provision

7.12 As indicated in Table 5 there are 53 primary schools within the Borough, with 12,779 pupils enrolled. The Controlled Sector is the largest provider with 32 schools and 7,774 pupils. Catholic Maintained primary schools' amount to 13 schools and 3,667 pupils, Controlled Integrated amount to 5 schools and 950 pupils, Other Maintained have 2 schools, 263 pupils, and 1 Grant Maintained Integrated school with 125 pupils.

Table 5: Primary School Enrolments 2017/2018

School	Approved Enrolment	Total Enrolment	Unfilled Spaces	Percentage unfilled
Abbots Cross Primary School	523	316	207	40%
Ashgrove Primary School	374	346	28	7%
Ballyhenry Primary School	317	176	141	44%
Carrmoney Primary School	448	410	38	8%
Earlview Primary School	221	205	16	7%
Gaelscoil Eanna	205	185	20	10%
Glengormley Integrated Primary School	446	338	108	24%
Hollybank Primary School	440	148	292	66%

School	Approved Enrolment	Total Enrolment	Unfilled Spaces	Percentage unfilled
Kings Park Primary School	425	373	52	12%
Mallusk Integrated Primary School	132	32	100	76%
Mossgrove Primary School	330	245	85	26%
Mossley Primary School	610	620	-	0%
Rathcoole Primary School	488	84	404	83%
St Bernard's Primary School	595	596	-	0%
St James' Primary School	387	226	161	42%
St Macnissis Primary School	210	193	17	8%
St Mary's-on-The-Hill Primary School	430	382	48	11%
Whiteabbey Primary School	414	413	1	0%
Whitehouse Primary School	406	410	-	0%
Metropolitan Newtownabbey sub-total	7,401	5,698	1,718	23%
Antrim Primary School	600	603	-	0%
Ballycraig Primary School	326	135	191	59%
Greystone Primary School	394	194	200	51%
Parkhall Primary School	443	203	240	54%
Rathenraw Integrated Primary School	223	114	109	49%
Round Tower Integrated Primary School	276	291	-	0%
St Comgall's Primary School	536	553	-	0%
St Joseph's Primary School	762	331	431	57%
St Oliver Plunkett Primary School	227	197	30	13%
Antrim sub-total	3,560	2,424	1,171	33%
Ballyclare Primary School	572	542	30	5%
Fairview Primary School	525	513	12	2%
Doagh Primary School	138	89	49	36%
Tir-na-Nog Primary School	77	25	52	68%
Ballyclare sub-total	1,174	1,080	94	8%
Crumlin Controlled Integrated Primary School	286	175	111	39%
Gaelscoil Ghleann Darach	105	78	27	26%
St Joseph's Primary School, Crumlin	745	563	182	24%
Crumlin sub-total	1,136	816	320	28%
Maine Integrated Primary School	160	125	35	22%
Mount St Michael's Primary School	444	395	49	11%
Randalstown Central Primary School	379	171	208	55%
Randalstown sub-total	983	691	292	30%
Ballynure Primary School	154	150	4	3%
Creavery Primary School	76	81	-	0%
Creggan Primary School	116	121	-	0%
Doagh Primary School	138	89	49	36%
Duneane Primary School	80	28	52	65%

School	Approved Enrolment	Total Enrolment	Unfilled Spaces	Percentage unfilled
Groggan Primary School	137	132	5	4%
Kilbride Primary School	135	137	-	0%
Loanends Primary School	203	204	-	0%
Moneynick Primary School	69	53	16	23%
Parkgate Primary School	86	69	17	20%
St Macnisius' Primary School	108	32	76	70%
St Oliver Plunkett Primary School	227	197	30	13%
Straid Primary School	119	43	76	64%
Straidhavern Primary School	125	56	69	55%
Templepatrick Primary School	406	409	-	0%
The Thompson Primary School	194	185	9	5%
Tildarg Primary School	80	84	-	0%
Villages, hamlets and countryside sub-total	2,453	2,070	403	16%
Borough total	16,707	12,779	3,998	24%

Source: <http://www.eani.org.uk/schools/area-planning/>

- 7.13 Significant spare capacity exists within primary schools in the Borough through unfilled places, in total, there were 3,998 unfilled places in primary schools in the Borough in 2017/18.
- 7.14 If these filled and unfilled spaces are attributed spatially by each DEA, Antrim DEA has the largest percentage of unfilled spaces, with 33% of total enrolment. Ballyclare DEA has the least amount of unfilled spaces, with 8% of total enrolment. The remainder of the DEAs exhibit similar levels of unfilled spaces.
- 7.15 The Primary Area Plan 2014 to 2018 (NEELB) noted that 14 of the 55 primary schools within the Borough are below the minimum enrolment threshold as detailed in the Sustainable Schools policy, which identifies stable enrolment trends as one of six key criteria. These schools are:
- Creavery;
 - Doagh;
 - Duneane;
 - Gaelscoil Ghleann Darach;
 - Mallusk;
 - Moneynick;
 - Parkgate;
 - Rathcoole;
 - Rathenraw;
 - St Macnisius;
 - Straid;
 - Straidhavern;
 - Tildarg; and
 - Tir-na-Nog

Post- Primary Provision

- 7.16 As set out in Table 6, within the 10 post primary schools in the Borough there were 8,195 enrolled pupils in the 2017-2018 school year. The majority of these were in the 5 schools in the Controlled Sector (4,322), with roughly equal, lesser

amounts within the Catholic Maintained, Controlled Integrated and Voluntary Grammar Sectors, with 973, 932 and 932 respectively.

Table 6: Post Primary Schools within the Borough 2017/18

School	Approved Enrolment	Total Enrolment	Unfilled Spaces	Percentage unfilled
Belfast High School, Newtownabbey	930	932	-	0%
Edmund Rice College, Newtownabbey	650	593	57	9%
Glengormley High School	1,250	725	525	42%
Abbey Community College	820	591	229	28%
Metropolitan Newtownabbey sub-total	3,650	2,841	809	22%
Antrim Grammar School	740	728	12	2%
Parkhall Integrated College, Antrim	735	742	-	0%
Antrim sub-total	1,475	1,470	12	1%
Ballyclare High School	1,210	1,228	-	0%
Ballyclare Secondary School	960	1,050	-	0%
Ballyclare sub-total	2,170	2,278	-	0%
Crumlin Integrated College	400	126	274	69%
St Benedict's College, Randalstown	500	380	120	24%
Borough total	8,195	7,095	1,215	15%

Source: <http://www.eani.org.uk/schools/area-planning/>

- 7.17 In terms of spare capacity within the Borough, there were 1,215 unfilled places in post primary schools in the Borough in 2017/18. Controlled schools have by far the greatest proportion of unfilled spaces with 766, followed by Controlled Integrated and Catholic Maintained with 274 and 177 respectively. Indeed as Table 5 indicates, there are a number of schools operating with pupil numbers in excess of the approved enrolment, particularly Ballyclare High School, Ballyclare Secondary School and Parkhall Integrated College, Antrim.

Further and Higher Education

- 7.18 The Northern Regional College (NRC) has one campus in the Borough at Shore Road, Newtownabbey, providing courses for approximately 5,542 students (2017/2018). It offers a range of courses for people aged 16+ through to adults; these include day and evening courses on a full and part-time basis.
- 7.19 Ulster University at present has a campus at Jordanstown, with a full and part-time enrolment of 12,590 students in the 2017/18 year. The Jordanstown campus is also home to the Sports Institute of Northern Ireland. It is anticipated however that the enrolment at the Jordanstown campus will fall significantly with the opening of the new Belfast campus and subsequent relocation of courses, which is due by 2020.

- 7.20 The College of Agriculture, Food and Rural Enterprise (CAFRE) is a 1,318ha campus at Greenmount, to the south of Antrim which provides for a range of further and higher education courses in the agricultural, horticultural and environmental fields. The facilities at Greenmount include a state of the art dairy unit incorporating the latest technologies.

Special Education Needs

- 7.21 There are 5 special schools in the Borough with an enrolment of 598 pupils, which cater specifically for children with special educational needs. These are located at Hill Croft School, Newtownabbey; Jordanstown School, Newtownabbey; Riverside School, Antrim; Rostulla School, Newtownabbey and Thornfield House School, Newtownabbey.
- 7.22 Many children with special educational needs are educated in mainstream schools. Within primary schools in 2017/18, there were 1,742 pupils with special educational needs (SEN) in stages 1-5 on the code of practice and within post primary schools there are 1,608 pupils with special educational needs in Stages 1-5 on the code of practice.

8 Health and Social Care Provision

Organisations Responsible for Health Care

- 8.1 The Department of Health (DoH) has overall responsibility for health and social care services, with an overall aim to improve the health and social well-being of the people of Northern Ireland. The Northern Health and Social Care Trust covers the Antrim and Newtownabbey Borough providing a range of services at locations distributed throughout as seen in Appendix 2.

General Health Levels

- 8.2 Based on Census 2011 data, the total population for all usual residents in Antrim and Newtownabbey was 138,567. Out of this, total 112,361 persons stated that they had very good to good health. 19,435 persons stated that they had fair health and 6,771 persons stated that they had bad to very bad health. In general, levels of health in Antrim and Newtownabbey, are better than the rest of Northern Ireland, as a whole.

Life Expectancy

- 8.3 Data derived from Northern Ireland Statistics and Research Agency (NISRA) states that life expectancy in the Borough for men is 78.39 years and 82.20 years for women, compared to the Northern Ireland average of 78.11 years for men and 82.42 years for women.

Health Deprivation

- 8.4 Northern Ireland Multiple Deprivation Measures (NIMDM) 2017 is an update of the NIMDM 2010. Northern Ireland is split into 890 spatial areas known as Super Output Areas (SOAs), of which 25 SOA's make up Antrim and Newtownabbey

Borough. The NIMDM identifies seven domains of deprivation and orders each SOA based on their results from the most deprived (rank 1) to least deprived (rank 890). One of the domains is health deprivation and disability, which identifies rates of premature deaths, and proportions of the population's quality of life impaired by poor health or disability. Figure 1 below shows the top 10 SOAs in terms of health deprivation for Antrim and Newtownabbey. Dunanney SOA is the most health deprived and Valley 2 SOA is the 10th ranked SOA in the Borough with respect to health deprivation.

Figure 1: Health and Disability Deprivation



Hospital Provision

8.5 Within the Borough hospital services are provided at:

- Antrim Area Hospital -Providing acute inpatient and hospital maternity services along with outpatients, day surgery, endoscopy and radiology;
- Whiteabbey Hospital - Providing a variety of services, including outpatients, day surgery, sub-acute rehabilitation, endoscopy and radiology;
- Holywell Hospital – a 149 bed psychiatric hospital that is the base for a wide range of mental health and addiction services, including covering acute admissions, dementia assessments, continuing care and rehab; and
- Muckamore Abbey Hospital – Providing inpatient, assessment and treatment facilities for people with severe learning disabilities and mental health needs, forensic needs or challenging behaviour

Journey Time to A&E

- 8.6 NISRA published data showing the average journey time within the Legacy Council areas of Antrim and Newtownabbey to A&E services. The data took account of the travel times to main hospital A&E services and hospitals with minor injury units only. Antrim legacy Council area had an average travel time of 10 minutes to both main hospital A&E services and hospitals with minor injury units. Newtownabbey legacy Council had an average travel time of 8 minutes to both main hospital A&E services and hospitals with minor injury units.

Ambulance Response Times

- 8.7 Data published by NISRA in 2017 shows that ambulance response times in Antrim and Newtownabbey ranked the third fastest of the 11 Councils, with an average response time of 10 minutes and 25 seconds, which is lower than the Northern Ireland average of 10 minutes and 36 seconds.

Doctors (GP) Surgeries

- 8.8 According to the DoH in 2018, there were 16 GP surgeries located within the Borough with 76 GPs working within them. The average GP practice list was 8,044 persons. There are 30 Pharmacies located within the Borough.

Dentists

- 8.9 Data published by NISRA in 2018 stated that there were 21 dental practices in Antrim and Newtownabbey, with 78 dentists within them.

Care for Elderly/Vulnerable

- 8.10 Inspection data held by the Royal and Quality Improvement Authority (RQIA) has shown that there are a number of additional facilities for care for the elderly and other vulnerable groups such as those with learning difficulties. The majority of these services are operated privately; independent of the health trusts but are answerable to the RQIA in terms of the level and quality of care provided. There are 5 statutory day care facilities (2 in Antrim, 2 in Ballyclare & 1 in Newtownabbey), 24 domiciliary care providers spread across the Borough, 23 nursing homes (located predominately in our towns and villages) and 11 residential care homes (located predominately in our towns)².

9 Community, Cultural and Leisure Facilities

- 9.1 The Council has civic offices at the Civic Centre in Antrim and Mossley Mill in Metropolitan Newtownabbey, which provide a range of services to the public including, Building Control, Planning, and Registration services, as well as providing the locations for the general administration of services for the Borough. The community facilities in the Borough are shown in Appendix 3.

² Source: [RQIA Register](#)

Community Centres

- 9.2 There are 11 community centres across the Borough, two of which are managed by local community organisations via Service Management Agreements (Monstown & Rathfern). Community centres are focal points within communities and provide for many social and recreational activities including community group meetings, birthday party bookings, senior citizen clubs, pre-school playgroups, etc.
- 9.3 The community centres are located at:
- Newtownabbey (Ballyduff, Monkstown, Rathfern, Whiteabbey, Dunanney Centre at Rathcoole);
 - Antrim (Stiles, Greystone, Muckamore, Parkhall and Rathenraw); and
 - Randalstown (Neilsbrook).

Leisure Centres

- 9.4 Within the Borough, there are six Leisure Centres, which are managed by the Council. These include the Valley Leisure Centre and Ballyearl in Newtownabbey, Sixmile Leisure Centre in Ballyclare, Antrim Forum and Allen Park in Antrim and Crumlin Leisure Centre in Crumlin.

Pavilions

- 9.5 There are also 2 pavilions in the Borough, which offer a range of activities for both children and adults. They are available to hire in different formats ranging from 20 seat spaces to 220 seat spaces. More information regarding pavilion provision, can be found on the Council's webpage. The Council's pavilions are located at:
- Mossley (Main Hall, Minor Hall and Meeting Room); and
 - Lillian Bland, Glengormley (Main Hall, Games Room).

Cultural and Arts Facilities

- 9.6 The Department for Communities (DfC) has assumed most of the responsibilities of the former Department for Culture, Arts and Leisure (DCAL). This includes responsibility for arts and creativity, museums, architecture and built environment policy.
- 9.7 'Ambitions for the Arts 2013-2018' is a five-year strategic plan to champion the arts, promote access and create a resilient sector. Cultural and arts facilities can enrich quality of life, promote inclusivity and create vibrant environments. Public art, workshops, galleries and exhibition spaces can create and enhance local distinctiveness and sense of place.
- 9.8 Antrim and Newtownabbey has a range of museums, heritage centres, theatres, cinemas and art galleries, which provides a thriving and vibrant cultural scene for our citizens and visitors. More information on these facilities can be found on the Council's webpage. These include:

- Antrim Castle Gardens – visitor attraction heritage gardens;
- Ballyclare Town Hall;
- Ballyearl Arts Centre.
- Clotworthy House – Arts Centre and Meeting facilities;
- Eyre Studio – Music Facility;
- Museum at The Mill;
- Pogues' Entry;
- Sentry Hill History House and Visitor Centre;
- The Courtyard Theatre;
- The Old Courthouse Theatre;
- The Oriel Gallery Exhibition Space and Coffee Shop;
- The White House;
- Theatre at the Mill;

9.9 Antrim and Newtownabbey has a rich diversity of historic buildings such as Sentry Hill, Patterson's Spade Mill and those buildings within the Borough's three conservation areas, and public parks, such as Jordanstown Lough Shore, Antrim Castle Gardens and Threemilewater Conservation Park. These are all part of our collective cultural heritage and should be welcoming and accessible to everyone.

Conference Facilities

9.10 Across the Borough, there are several Council establishments, which cater for conference facilities. These include:

- Antrim Civic Centre;
- Antrim Castle Gardens;
- Ballyclare Town Hall;
- Ballyearl Arts & Leisure Centre;
- Mossley Mill;
- Museum at The Mill;
- Sentry Hill;
- The Courtyard Theatre;
- The Old Courthouse;
- Theatre at The Mill; and
- Pavilions.

Libraries

9.11 Libraries NI has the statutory responsibility for the provision of public libraries across Northern Ireland. In recent years it has conducted a review of library branches and services with a view to creating a modern, fit for purpose library service. The result has been a significant rationalisation of library services. There are 8 libraries in the Borough located at:

- Newtownabbey (Cloughfern, Glengormley, Rathcoole);
- Antrim (Railway St and Greystone);
- Ballyclare;
- Crumlin; and
- Randalstown.

9.12 These static libraries are supplement by 15 rural mobile library stops within the Borough.

Places of Worship/Halls

- 9.13 There are 168 places of worship for a broad range of religious denominations within the Borough. These include churches and religious meeting halls. (*Land and Property Services, Property Data*).
- 9.14 There are 54 halls within the Borough including Scout halls, Orange Halls, Masonic Halls and Army Cadet Halls etc. (*Land and Property Services, Property Data*).

Emergency Services

- 9.15 There are 2 police stations in the Borough, located at Antrim and Newtownabbey. They are the base for local policing teams, providing 24-hour coverage and are supported by Neighbourhood Policing Teams in each location.
- 9.16 There are four fire stations in the Borough, located at Antrim, Ballyclare, Crumlin and Glengormley. There are 2 ambulance stations located at Whiteabbey and Antrim. There is also 2 ambulance outposts located at Glengormley and Ballyclare.

Jobs and Benefit Offices

- 9.17 There are 2 Jobs and Benefits Offices located within the Borough at, Castle Street, Antrim and Church Road, Newtownabbey.

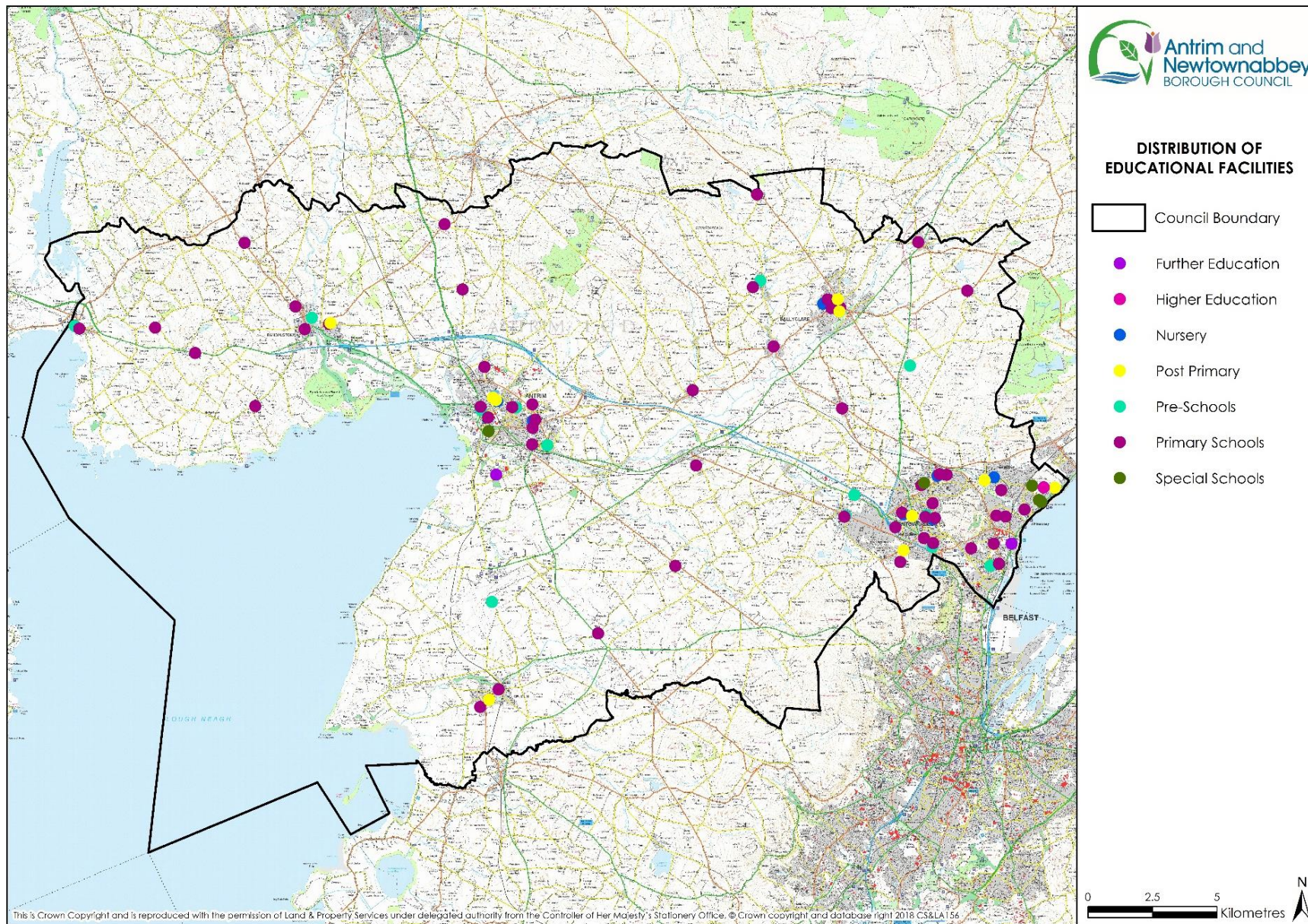
Post Office

- 9.18 There are 22 post offices within the Borough which are located at: Parkhall, Antrim; Ballymena Road; Antrim; Castle Centre, Antrim; Greystone Road, Antrim; Muckamore, Antrim; Templepatrick; Randalstown; Doagh; Crumlin; Toomebridge; Ballyclare; Ballyrobert; Ballynure; Mallusk, Newtownabbey; Carnmoney, Newtownabbey; Monkstown, Newtownabbey; Cloughfern, Newtownabbey; Carnmoney, Newtownabbey; Whiteabbey, Newtownabbey; Abbots Cross, Newtownabbey; Rathcoole, Newtownabbey; and Glengormley, Newtownabbey.

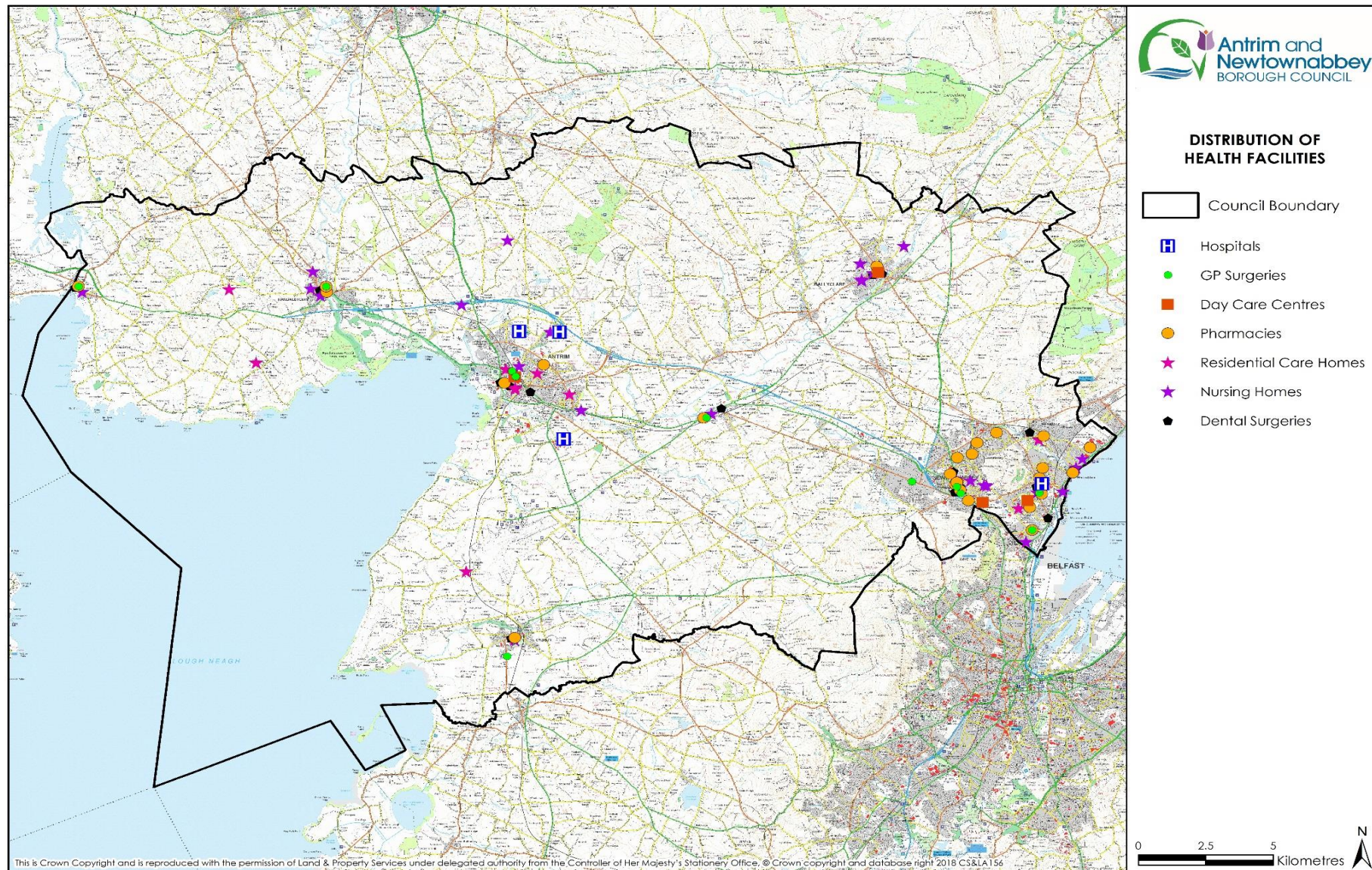
10 Key Findings

- There are 3 Further and Higher Education campuses in the Borough, namely Ulster University Jordanstown, CAFRE and Northern Regional College.
- There are 10 Post Primary Schools in the Borough, with 1,256 unfilled spaces among them.
- Ballyclare has no spare capacity at Post Primary School Level.
- There are 53 primary schools within the Borough, with 3,990 unfilled spaces. 14 of the 53 primary schools within the Borough are considered to be below the minimum enrolment threshold as detailed in the Sustainable Schools policy.
- Ballyclare is the area with the smallest number of unfilled spaces at primary schools.
- There are 7 stand-alone nursery schools in the Borough, with 10 nursery units within existing primary schools.
- There are 5 special schools in the Borough with 598 enrolled pupils.
- There are 366 registered childcare providers offering a range of childcare facilities in the Borough.
- The Northern Health Trust offers a full range of healthcare facilities in the Borough.
- There are 16 GP surgeries, 23 dental surgeries and 30 pharmacies in the Borough.
- There are 10 community centres, 5 leisure centres, 2 pavilions and a range of other cultural facilities provided by the Council within the Borough.
- There are 168 places of worship and 54 halls in the Borough.
- The 2 main civic buildings are Antrim Civic Centre and Mossley Mill.
- There are 8 libraries and 15 rural mobile library stops in the Borough.
- There are 2 police stations, 4 fire stations, 2 Jobs and Benefits Offices within the Borough and 22 post offices.

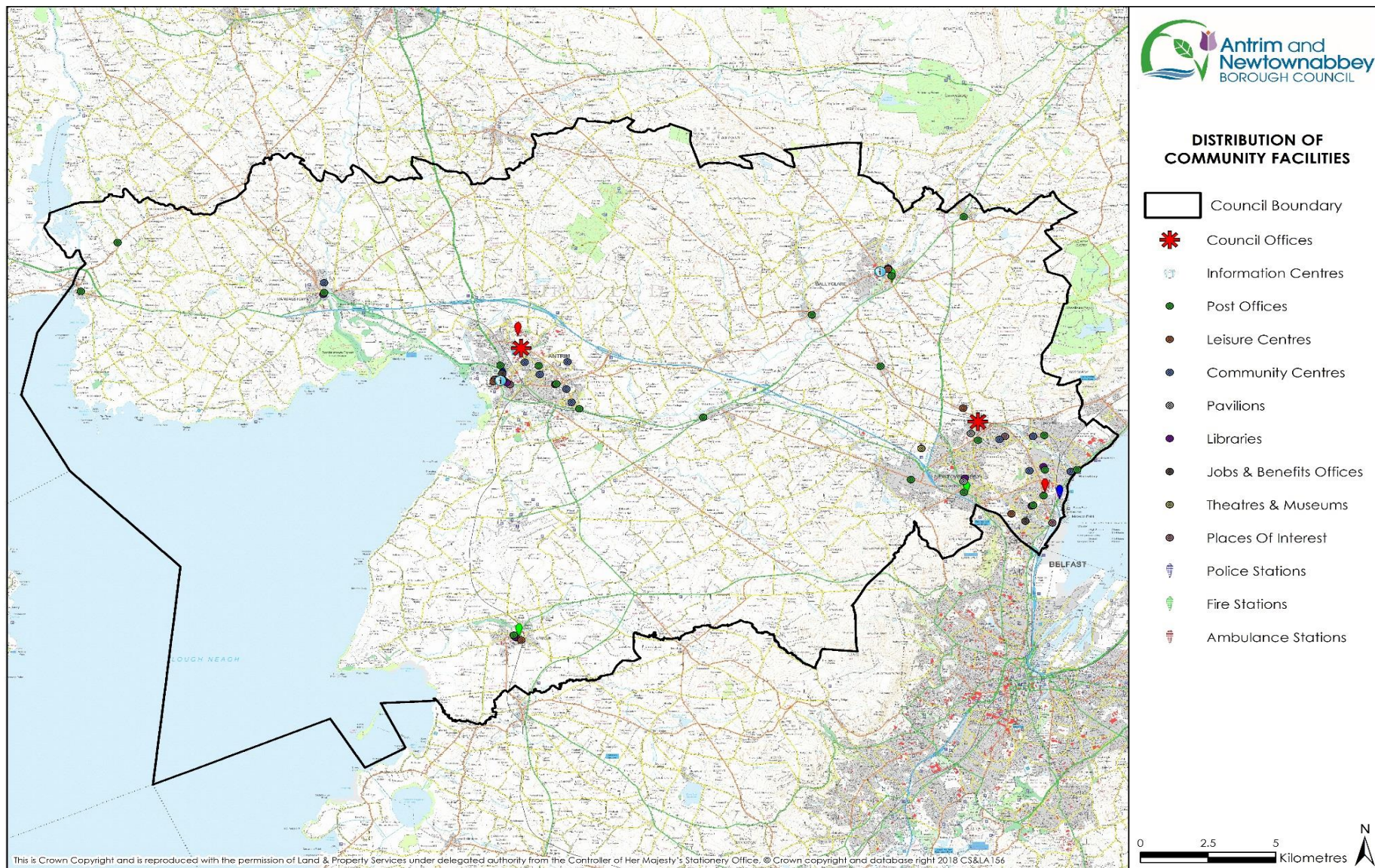
Appendices

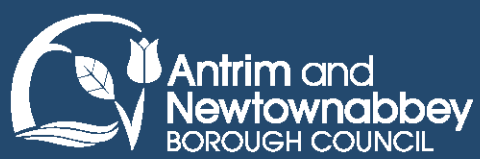
Appendix 1 – Distribution of Educational Facilities

Appendix 2 – Distribution of Health Facilities



Appendix 3 – Distribution of Community Facilities





Mossley Mill
Carnmoney Road North,
Newtownabbey
BT36 5QA

Antrim Antrim Civic Centre
50 Stiles Way,
Antrim,
BT41 2UB

www.antrimandnewtownabbey.gov.uk