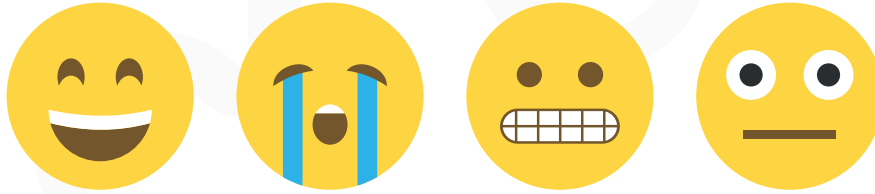


My Visit to Antrim Castle Gardens & Clotworthy House



Everyone feels different when visiting a new place or trying something new.
There are new sounds, smells and you may not know what to expect.

You may feel like this -



Location of Clotworthy House



Clotworthy House can be accessed via bus, car & by foot.
Antrim Bus/Train station is a 10-12 minute walk from the
entrance of the building.



When you arrive at Antrim Castle Gardens, you will go through these gates and down the long driveway.



At the bottom of the driveway, you will find a large car park at the front of the main building.



Welcome to Clotworthy House



Coming for an interview or just visiting?

Go to reception and they will point you in the right direction



We have three lifts throughout Clotworthy House. One in the gallery, conservatory and the exhibition space.



Follow the signs to the meeting rooms or café



To get to the courtyard and café walk through the second archway



The Café is on your left hand side in the Courtyard



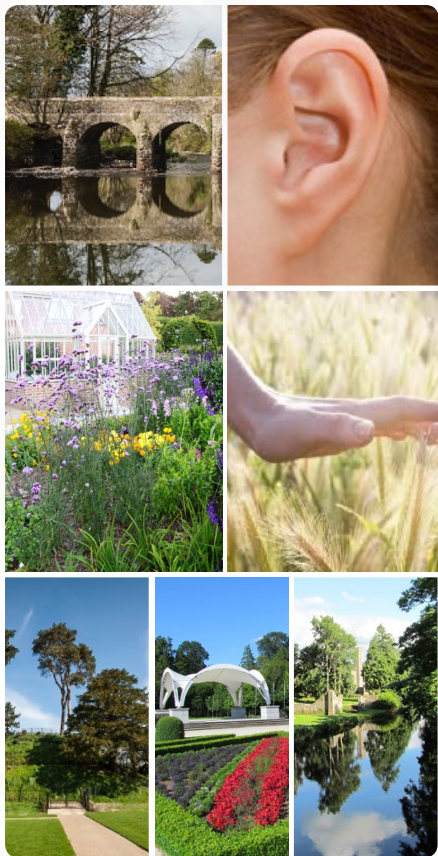
There are three sets of toilets in Clotworthy House. One above reception, one outside at the green doors and the third in the conservatory beside the café.



Look for these signs



While at Clotworthy, you can visit our onsite Art Gallery or The Garden Heritage space to learn about the history of Antrim Castle Gardens. These spaces can also be used as quiet areas.



Why not take a walk around the gardens, to see what you can hear and touch the nature around you.



While onsite you can visit Clotworthy House Gift Shop



When leaving to go home go back through the courtyard towards reception

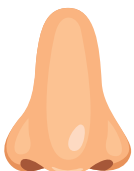
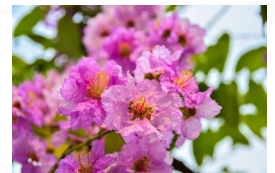
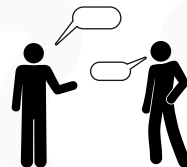


From Reception archway, you will see the carpark

The following steps should help make your visit feel more familiar, so that you know what to expect.



Noises and smells you might notice while down at Antrim Castle Gardens.



For access to the internet, please see below

