

# Antrim and Newtownabbey Labour Market Partnership

## Summary Action Plan: 2022-23

Funded by the Department for Communities, Department for the Economy and supported by Antrim and Newtownabbey Borough Council, Antrim and Newtownabbey Labour Market Partnership will deliver a range of programmes to help our residents gain the work-ready skills, experience or qualifications needed to move into employment or a to move into a better job.

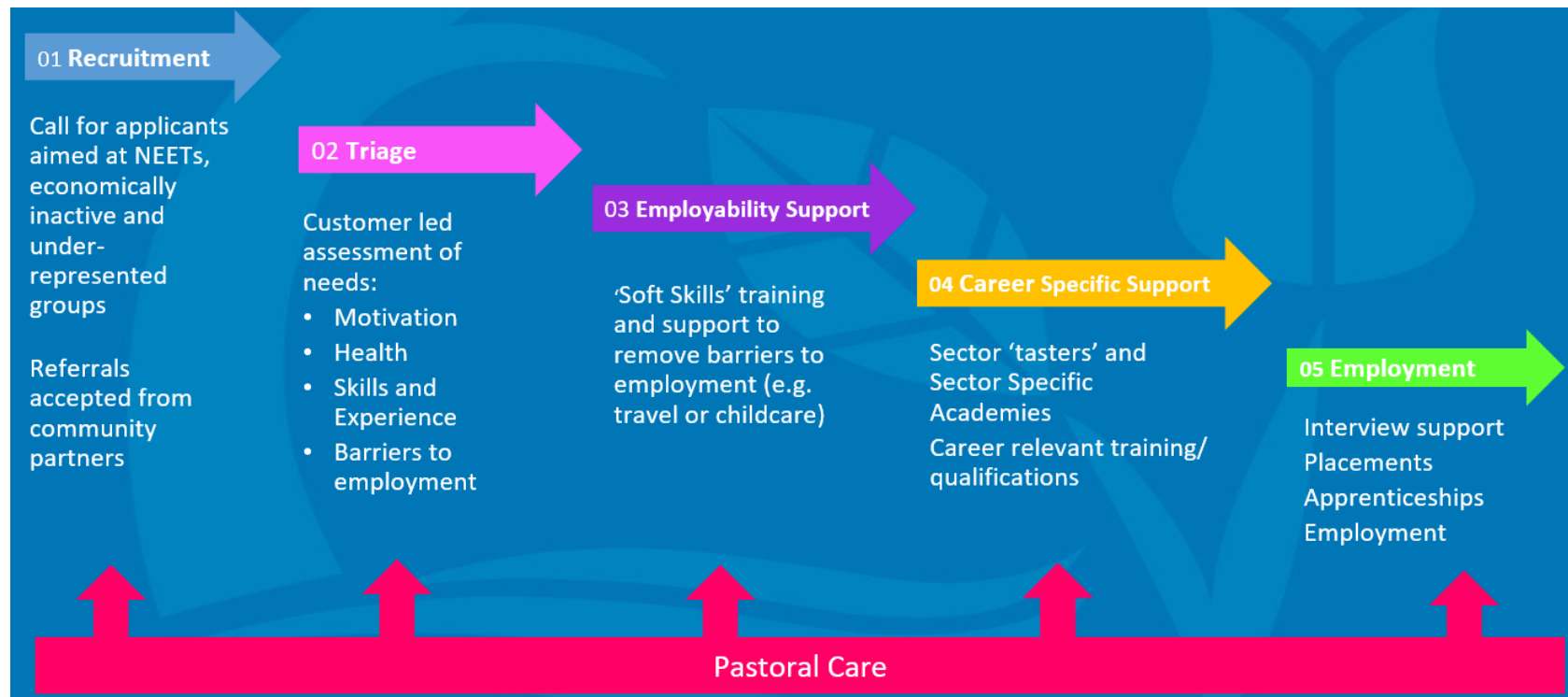
ANTRIM AND NEWTOWNABBEY

Labour Market Partnership

Working Together



The Antrim and Newtownabbey Labour Market Partnerships Action Plan is designed to deliver a pathway of support which recognises that moving people towards employment is not a 'one size fits all' solution and requires a broad mix of options, tailored to individual needs. The first stage is recruitment followed by a triage approach, where a case worker will assess the customer's needs and find the best solutions for the individual. Following triage, support will be available to undertake skills training and to remove barriers to employment. Stage four of the pathway, Career Specific Support provides 'taster' academies and other career-specific training and stage five is the opportunity of employment for the participant. Depending on participant requirements, interview support, placements, apprenticeships and employment may all be available at this stage. Throughout the pathway, ongoing pastoral support will be offered to participants. A visual representation of the support pathway can be seen below.



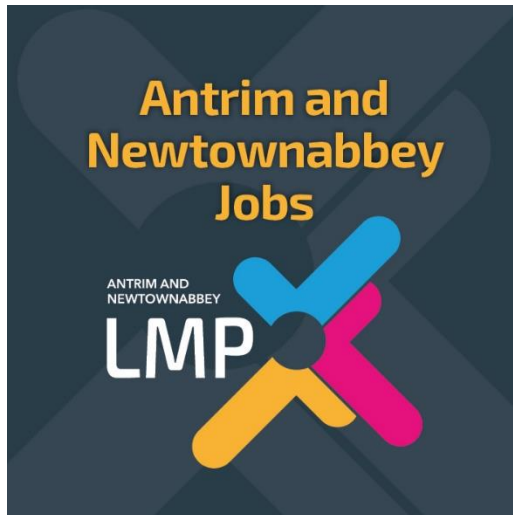
Strategic Intent	Targets	Key Actions	Milestones
<p>To improve employability outcomes and/or labour market conditions locally for 3 target groupings:</p> <p><b>Youth unemployed</b> (aged 18-24)</p> <p><b>Economically Inactive</b></p> <p><b>Current Claimants</b></p>	<p>By 2024 we will:</p> <ul style="list-style-type: none"> <li>Reverse the recent upwards trend for youth unemployment leading to a decrease in the proportion of young people aged 18-24 in receipt of an unemployment benefit to 3.5%.</li> <li>Reduce the working age economic inactivity rate in the Borough to 20%.</li> <li>Reduce the number of residents who are unemployed, yet actively seeking work (so on the claimant count) to 2%.</li> </ul>	<p>Develop a strong Antrim and Newtownabbey Labour Market Partnership to provide a co-ordinated response to jobs and skills challenges in the Borough.</p>	<p>Bi-monthly meetings of the Antrim and Newtownabbey Labour Market Partnership.</p>
		<p><b>RECRUITMENT</b> Recruitment of participants onto the pathway through a PR campaign and a community animation programme to help identify those who could benefit from support, improve their self-confidence and motivation.</p>	<p>Raising awareness of the work of the Antrim and Newtownabbey Labour Market Partnership and ongoing recruitment of participants – particularly those furthest from the labour market – onto the pathway of support.</p>
		<p><b>TRIAGE</b> Triage Programme offering participants a caseworker assessment to develop a personal action plan and pastoral care.</p>	<p>Individuals accessing dedicated support to plan for their employability and skills journey.</p>
		<p><b>EMPLOYABILITY SUPPORT</b> Funding support to remove barriers to employment for participants (for example childcare / transport).  Support to access “work-ready” qualifications potentially leading to immediate employment opportunities.</p>	<p>Barriers to employment removed and appropriate training and qualifications in place to support residents to gain new employment.</p>
<p><b>CAREER SPECIFIC SUPPORT</b> Deliver a wide range of employment academy programmes to connect</p>	<p>Residents of Antrim and Newtownabbey, including youth unemployed, economically inactive and those on the</p>		

		<p>residents with new or better employment opportunities. This will include industry-specific training and qualifications with involvement from local employers.</p> <p>Entrepreneurship Programme to promote self-employment.</p>	<p>claimant count gain new skills and qualifications to secure new employment or self-employment.</p>
		<p><b>EMPLOYMENT</b> Connecting employers with residents and promoting local employment opportunities and career pathways. Facilitating interviews, placements and apprenticeships to help secure employment.</p>	<p>Residents of Antrim and Newtownabbey gaining new employment.</p> <p>Employers in the borough filling vacancies.</p>
<p>To support all residents to achieve their full potential.</p>	<p>We will support residents to find better employment, which in turn will create new employment opportunities for residents on our pathway.</p>	<p>Deliver a tailored programme targeted at those underachieving in employment (job level or hours) to support them into employment that is more appropriate.</p>	<p>Residents of Antrim and Newtownabbey achieving their full potential by gaining new employment, relevant to their qualifications and experience.</p>
<p>To improve employability outcomes for all residents and improve labour market conditions for both employers and residents.</p>	<p>By raising awareness of the work of the Labour Market Partnership and the opportunities within Antrim and Newtownabbey, we can work towards our 2024 targets outlined above.</p>	<p>Organise and attend job fairs to allow residents to meet employers and career advisors to explore opportunities.</p> <p>Develop ambassador profiles to inspire residents, including young people, by showcasing local employment opportunities and career pathways.</p> <p>Review and promote work placements and apprenticeship opportunities.</p>	<p>Promote local employment opportunities and build awareness of the various sectors and career opportunities available across Antrim and Newtownabbey.</p> <p>Provide opportunities for residents to gain work experience with local employers.</p>

For further information on the Antrim and Newtownabbey Labour Market Partnership, contact us:

E: [skills@antrimandnewtownabbey.gov.uk](mailto:skills@antrimandnewtownabbey.gov.uk)

W: [www.antrimandnewtownabbey.gov.uk/skills](http://www.antrimandnewtownabbey.gov.uk/skills)



To find local employment, visit our Facebook page  
[www.facebook.com/ANBoroughjobs/](https://www.facebook.com/ANBoroughjobs/)