

# My Visit to Theatre at The Mill





This is Theatre at The Mill. There is lots of space for you to run around and play outside.



When you are ready to come inside, you will go in through the front doors. These are automatic doors that open by themselves when you walk up to them.



When you walk through the front doors you will be in the foyer. This is a space where people can wait until it is time to go into the theatre. There might be lots of other people here at the same time as you. At night time, you may see coloured lights.



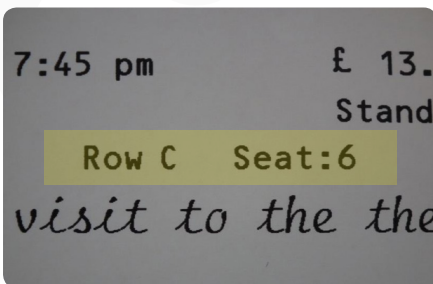
Yarns café bar is in the foyer. You can buy a drink or a snack here before the show. You can sit at one of the tables in the foyer to have your drink or snack, or you can take it to one of the tables outside if you want to.



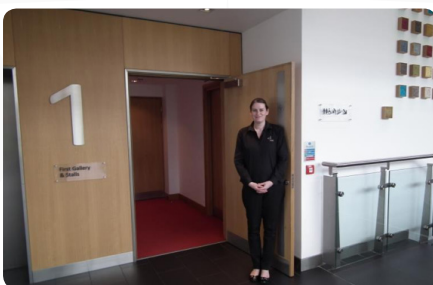
This is the Box Office. This is where you can buy a ticket to see the show. If you have already bought your ticket, you might collect it here.



Your ticket will tell you lots of things including what the show is called, what time it starts at and where your seat is.



This part of your ticket tells you where your seat is.



When it is time for the show to start you will hear an announcement telling you the doors into the auditorium are open. Each door will have an usher. Ushers are people who help you find your seats. They wear black Theatre at The Mill uniforms. If you have any questions about the theatre or need any help you can ask an usher.



The usher will look at your ticket to see where your seat is, and then help you find your seat. Sometimes the usher might ask you to go to another door which is closer to your seat. If your seat is in the gallery, you will go upstairs in the lift. The usher upstairs will show you where your seat is.



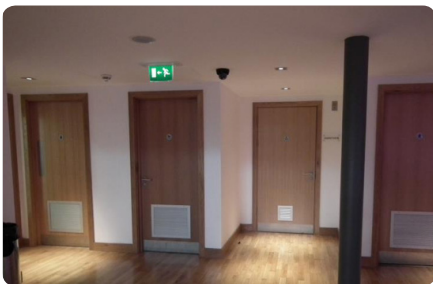
This is a sign to show you that the toilets are downstairs.



You can get to the toilets by going down the stairs or using the lift.



When you get downstairs you will be in the lower foyer.



The toilets are near the bottom of the stairs.



This is the auditorium. This is where you will sit to watch the show. There may be a lot of other people in the auditorium. You might be sitting beside someone you don't know. This is ok.

In this picture you can see the set. This is where the actors will tell their story during the show. Sometimes a curtain will be closed so you can't see the set. This is ok. When the show starts the curtain will open so you can see the set.

Just before the show starts, the lights in the auditorium will be turned down and it might get dark. You can hold your companion's hand if it's a bit scary at first. The lights on the stage will come on, and the show will start. The actors will come onto the stage and tell their story. If you need to talk to your companion it's good to use a quiet voice so other people can still hear the actors. Sometimes there will be music. If it is loud you can put your hands over your ears or put on your headphones.



In the middle of the show there is a break called an interval. The lights will come back on and you can go to the bar for a drink and a snack, or go to the toilet. You can go outside onto the grass if you want to.

It's ok to stay in your seat in the auditorium if you want to.

After the interval there will be an announcement telling you the second half of the show is about to start. If you

have gone out of the auditorium, this means it is time to go back to your seat. The ushers can help you find your seat again.

At the end of the show people in the audience will clap. This is to show the actors they have enjoyed the show. You can clap too if you have enjoyed the show. It's ok if you do not want to clap.



**You have been to see a show in Theatre at The Mill. We hope you enjoyed your visit and will come back again soon!**

