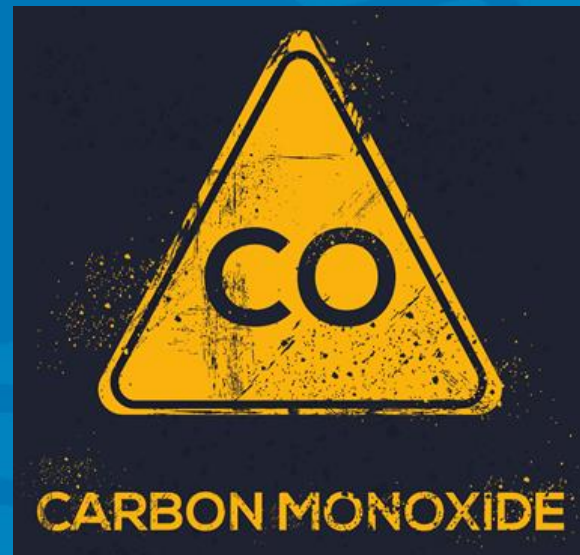
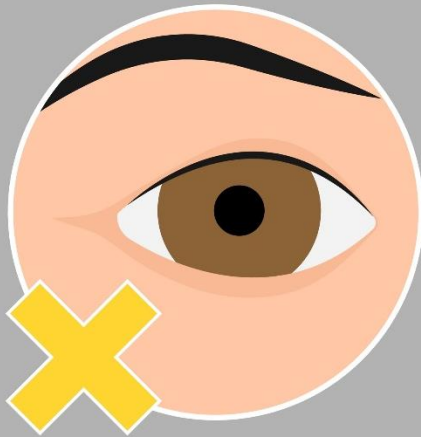


Preventing Carbon Monoxide Poisoning

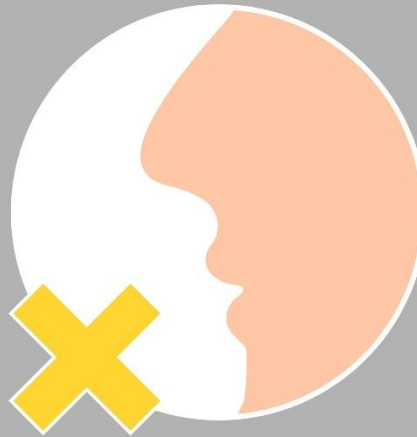


What is Carbon Monoxide (CO)?

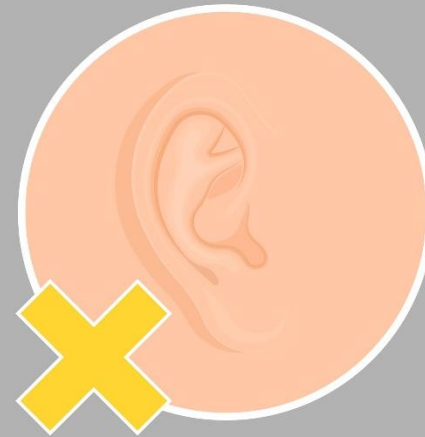
A poisonous gas that...



CAN'T BE SEEN



CAN'T BE SMELLED



CAN'T BE HEARD

Produced by the incomplete
combustion of fuels such as

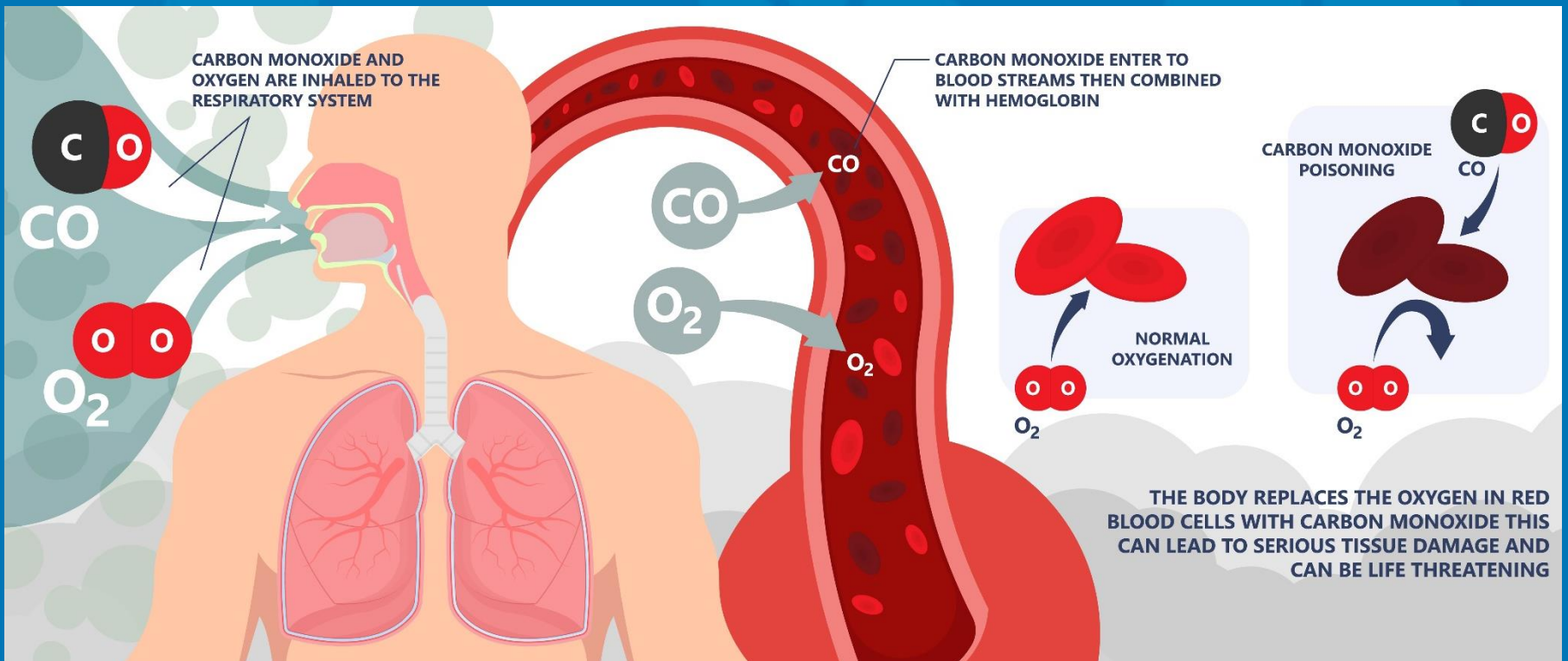
Oil Gas Petrol

Wood Coal Charcoal

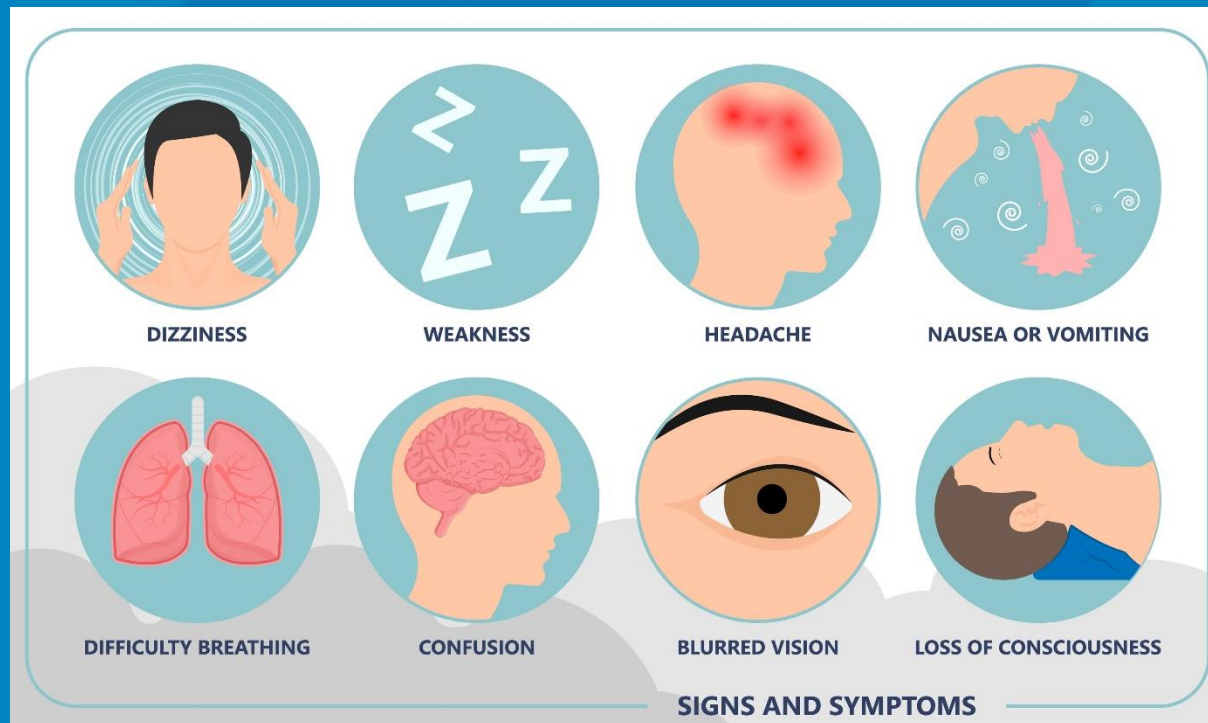
Caused by faulty appliances, blocked
chimney/flue or impaired oxygen
supply/ventilation

CO Poisoning

When CO is inhaled it starves the body of oxygen



Symptoms of CO Poisoning



CO Poisoning can be misdiagnosed so if you think you are suffering from CO poisoning. Consult your Doctor or call 999.

How can I protect myself?

- **Service appliances annually.**
- Always use a reputable engineer who is suitably qualified.
 - Gas Safe
 - OFTEC for Oil
- **Get Chimneys & Flues swept regularly.**



- Get a electronic CO alarm. These are the only way of knowing if CO is being given off
- Its recommended that each room with a fuel burning appliance has a CO alarm. Follow the manufacturer's fitting instructions carefully
- Test CO alarms regularly and check if the alarm has a 'replace by date'



What to do in an emergency? Think T.A.S.K!

Turn off or extinguish the heating source/appliance if safe to do so

Air - ventilate your home by opening windows and doors, stay outside in the fresh air

Seek medical help if you feel unwell

Keep all heating sources/appliances off until serviced (or chimney/flues cleaned) by a qualified professional

What to do in an emergency?

- If you experience any symptoms and believe CO may be involved, seek urgent medical advice from either your Doctor or Emergency Department.
- **Ask for a blood or breath test to confirm the presence of CO. Be aware, tests may be inaccurate if taken more than 4 hours after exposure has ceased.**

For more information contact 028 9034 0160 or
envhealth@antrimandnewtownabbey.gov.uk

To find qualified engineers:

Gas Safe Register		www.gassaferegister.co.uk
OFTEC		www.oftec.co.uk
NI Association of Chimney Sweeps		www.niacs.co.uk